

MALE

# URSEC®

FEMALE

## SPILLPROOF SAFETY URINAL

THE ONLY ONE WITHOUT LID OR COVER THAT EVEN UPSIDE DOWN RETAINS ITS CONTENTS UP TO 1 LITER  
FOR THE BEDRIDDEN, THE DISABLED, HOSPITALS, NURSING HOMES, AMBULANCES ...

**ANTI-REFLUX**  
PERMANENT SECURITY

**REMOVABLE HANDLE**  
GLOW IN THE DARK

**MTQUICK®**  
EASY AND CLEAN

**AIR PASS®**

comfortable and reversible

for hygienic and secure emptying

**FEMININE FITTING**  
ergonomic removable (sold separately)

FEMALE

GRADUATIONS

**NOTCHES**  
easy grip

**HYGIENE**

No dirty cover to manipulate:  
easy direct access  
usable one-handed

MALE

**ANTI-REFLUX screw-on system**

no risk to unplug itself and spill its contents

Comfortable and smooth shapes

Can be used one-handed independently

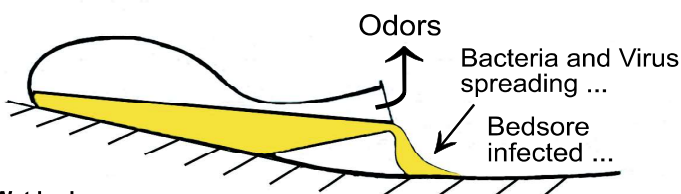
**STERILIZABLE AT 130°C/266°F**  
or with chlorine

Polypropylene: does not yellow

**VISIBLE LEVEL**  
INDICATES LEVEL AND TIDINESS  
Anti-reflux capacity: 1 Liter

**FOR AN ACTIVE PREVENTION AGAINST NOSOCOMIAL INFECTIONS**

**Never again :**

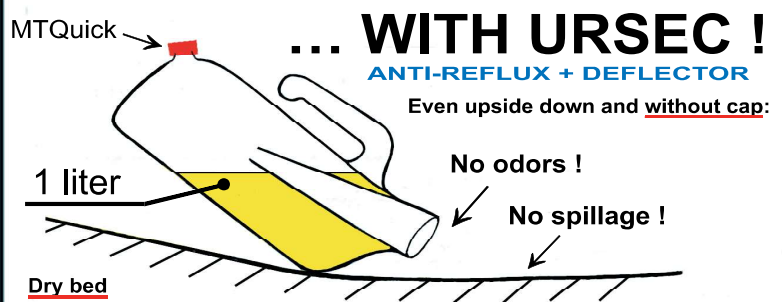


**Wet bed**  
→ Incomfort, laundry, cleaning and disinfections costs !  
The Open Door to INFECTIONS ...

**... WITH URSEC !**

**ANTI-REFLUX + DEFLECTOR**

Even upside down and without cap:



**Dry bed**  
→ Comfort and Economy  
Bacteria and Virus stay captive: absolute hygiene !

**3 SPILLS PREVENTED WILL MORE THAN PAY FOR THE COST OF URSEC !**

**MADE IN FRANCE**



REGISTERED TRADEMARKS  
PATENTS IN 21 COUNTRIES

Manufactured exclusively by **GOUGET** (Paris, France). Internet: [www.gouget.com](http://www.gouget.com)  
Documentation for information only. Specifications may vary.

**PRIX INTERMEDICA**



**PERFORMANCES**

© 2017 GOUGET

MALE

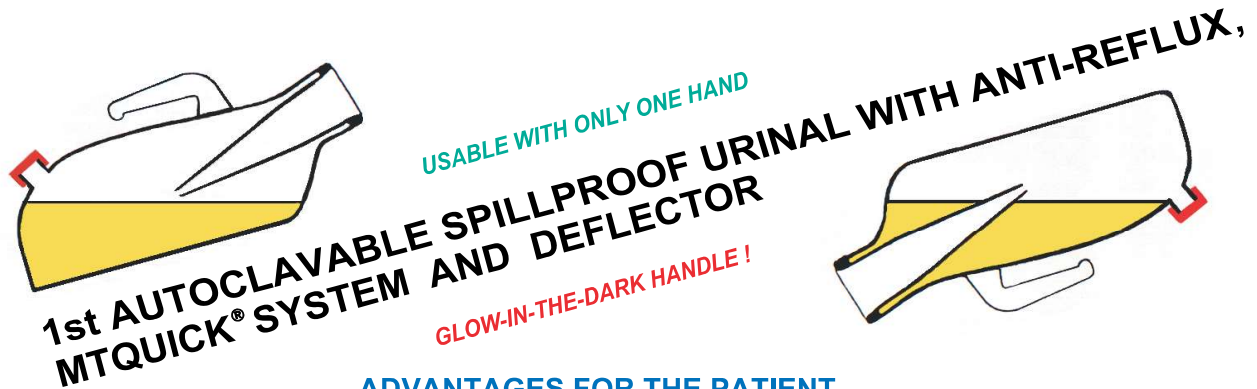
# URSEC®

FEMALE

**ANTI-REFLUX SPILLPROOF URINAL WITH MTQUICK AND DEFLECTOR**  
THE ONLY ONE WITHOUT LID OR COVER THAT EVEN UPSIDE DOWN RETAINS ITS CONTENTS UP TO 1 LITER

## WHY CHOOSE THE URSEC URINAL ?

- ➔ **ABSOLUTE SECURITY** : screw-on Anti-reflux, no accidental unplugging. Easy to clean (Chlorine).
- ➔ **PRACTICAL** : no lid or cover often dirty and cumbersome to take off ! Immediately usable.
- ➔ **URSEC TRANSPARENT BODY** : instant visual control (cleanliness, level, aspect of contents).
- ➔ **100% EFFICIENT** : keep its contents till 1 liter without spills even upside down, even during tilting.
- ➔ **NO LID OR COVER** : no smelly uncovering. No need to call. Can be used one-handed independently.
- ➔ **MADE OF SMOOTH, HYPOALLERGENIC, AUTOCLAVABLE AND REUSABLE POLYPROPYLENE.**



### ADVANTAGES FOR THE PATIENT

- If URSEC rolls over in bed, there is no problem: sheets remain dry. **It will not leak.**
- It is strong, light and easy to handle, even in the dark. URSEC empties at the back (better hygiene) with the MTQuick® system.
- To plug the MTQuick system, use either the regular white screw-on cap or the red childproof cap (**both caps supplied**)
- URSEC has a capacity of approximately 1 liter (32 oz). With URSEC always ready, the patient can sleep peacefully.
- The ergonomic **glow-in-the-dark** removable handle makes using and emptying URSEC easy.

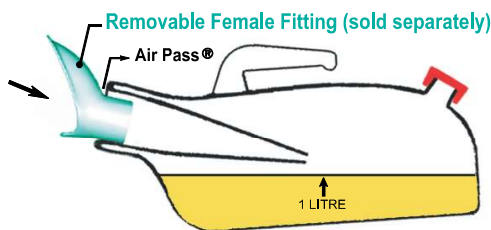
### ADVANTAGES FOR THE INSTITUTION

- **SPILLPROOF**: even if URSEC is rolled over in bed, its contents cannot spill thanks to its simple but effective design.
- URSEC therefore prevents the discomfort of wet beds and avoids the need to frequently change and wash the patient's sheets.
- It helps **fight nosocomial infections and reduces the need for frequent disinfecting.** URSEC is **re-usable.**
- At night, URSEC can be left in the bed, instantly available to the patient, who needs not call for assistance. Usable even with 1 hand.
- 96% enclosed, URSEC is nearly **odor free and does not need any cover.** Its use is not noisy.
- URSEC is european designed. It has a graduated measure so no odorful transfer is needed to assess the volume of the miction !
- URSEC can be washed (with water + Chlorine or disinfectant), **sterilized by autoclave (130°C/266°F) or ethylene oxide.**
- The MTQuick system allows a quick, practically odorless, and hygienic emptying (no splashing).

### BY IMPROVING THE HYGIENE OF INSTITUTIONS, URSEC WILL HELP THEM GET THE ACCREDITATION

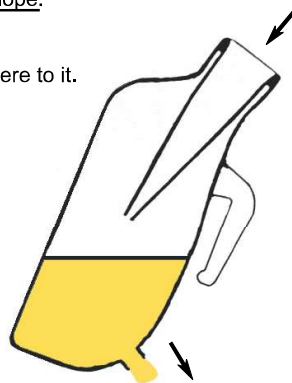
#### USE

URSEC is not supplied sterile: **sterilize before use.**  
 URSEC should be placed in the bed or held with a slight slope.  
 It must be used only with the anti-reflux on.  
 It should not be filled above the 1 liter mark (32 oz).  
 The plastic of URSEC does not yellow, urine does not adhere to it.  
 The end of yellowish ordinary urinals !  
 Once rinsed out, URSEC becomes clear again.



**URSEC + FITTING = FEMALE URSEC**

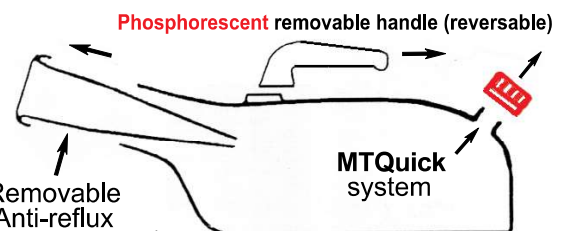
Fresh Air



Precise emptying via MTQuick®

#### CLEANING - DISINFECTING

Female URSEC: unplug the Feminine fitting  
 Then for both models:  
 Unscrew the **ANTI-REFLUX** and the **MTQuick.**  
 Rinse with water and Chlorine or a good disinfectant (bedpan washer compatible)  
 Sterilizable by autoclave (130°C or 266°F except childproof cap) or Ethylene Oxide  
 Twist on the **ANTI-REFLUX** and the **MTQuick**



**MALE URSEC**

**3 SPILLS PREVENTED WILL MORE THAN PAY FOR THE COST OF URSEC !**



**SURE TO BE SAFE**

