

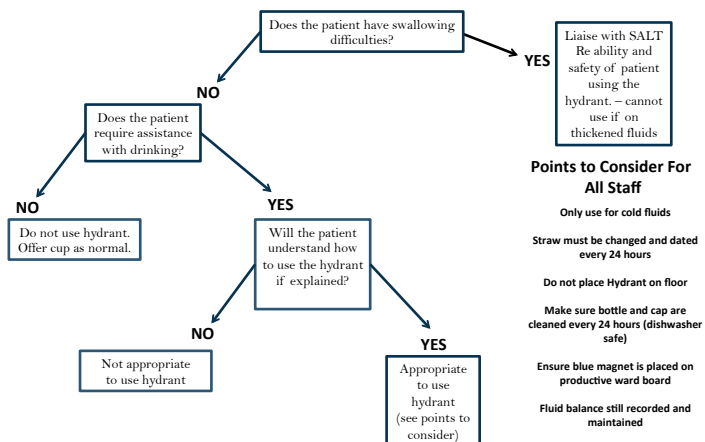


Instructions for using The Hydrant

The Nurse or Carer should ensure that the user is familiar with the following:

- 💧 The Hydrant is a medical device designed to prevent dehydration in vulnerable groups.
- 💧 The ability of the patient / user to use The Hydrant should be confirmed by the nurse / carer. See example assessment below from Jupiter Ward , Great Western Hospital , Swindon
- 💧 Rinse before using
- 💧 Remove all packaging and fill the bottle with fluid, replace the cap and slide the tube through the cap into the bottle until it reaches the bottom
- 💧 Check bite valve is securely attached to the drinking tube before use
- 💧 Hang or clip The Hydrant securely on a bed, chair, wheelchair etc so that the tube easily reaches the user to enable independent use
- 💧 Instruct the user to place the bite valve in the mouth and bite to open the valve - it's worth practicing this with your fingers to see how it works
- 💧 Suck to bring fluid through the tube
- 💧 If The Hydrant is positioned above head height then once fluid is in the tube it becomes a siphon and no further sucking is needed, simply bite the valve to control the flow
- 💧 When the user has finished drinking, they should release the bite valve. It is a non-return, non-drip, valve and will close and seal when released but will retain fluid in the tube
- 💧 The clothing clip attaches the tube to clothing, or other places, as required
- 💧 Do not use The Hydrant for HOT fluids. Cold or warm liquids only
- 💧 Not for dispensing of medicines
- 💧 Do not hang on hot surfaces like radiator

Jupiter Ward – Hydrant Assessment



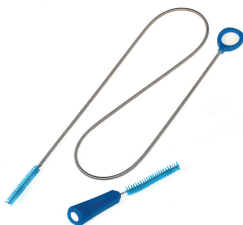
Points to Consider For All Staff

- Only use for cold fluids
- Straw must be changed and dated every 24 hours
- Do not place Hydrant on floor
- Make sure bottle and cap are cleaned every 24 hours (dishwasher safe)
- Ensure blue magnet is placed on productive ward board
- Fluid balance still recorded and maintained



Caring for The Hydrant – Instructions for Nurses / Carers / Users

- ◆ Do not immerse bottle or cap in boiling water
- ◆ Bottle and cap should be washed in warm soapy water
- ◆ Always wash or rinse before refilling
- ◆ Bottle and Cap are dishwasher safe to a maximum temperature of 65 degrees centigrade
- ◆ If preferred, a mild bleach solution such as Milton may be safely used to sterilize
- ◆ Tube and bite valve should be replaced regularly or disassembled and cleaned internally – we recommend using our cleaning kit, or similar, to do this (see below for picture)
- ◆ In a Hospital environment the tubes are single patient use only and should be changed daily to ensure infection risks are minimized
- ◆ In a care home environment the tubes are single person use only and should be cleaned daily and replaced on a regular basis
- ◆ Tube and Bite Valve Cleaning Kit:



Contact us:

Phone: 0800 292 2382

Email: info@hydrateforhealth.co.uk

Website: www.hydrateforhealth.co.uk